

Public Information

**Willamette Complex South
OR-WIF-240264**

09/03/2024

13,580 acres at 09/01/2024 2303 hrs

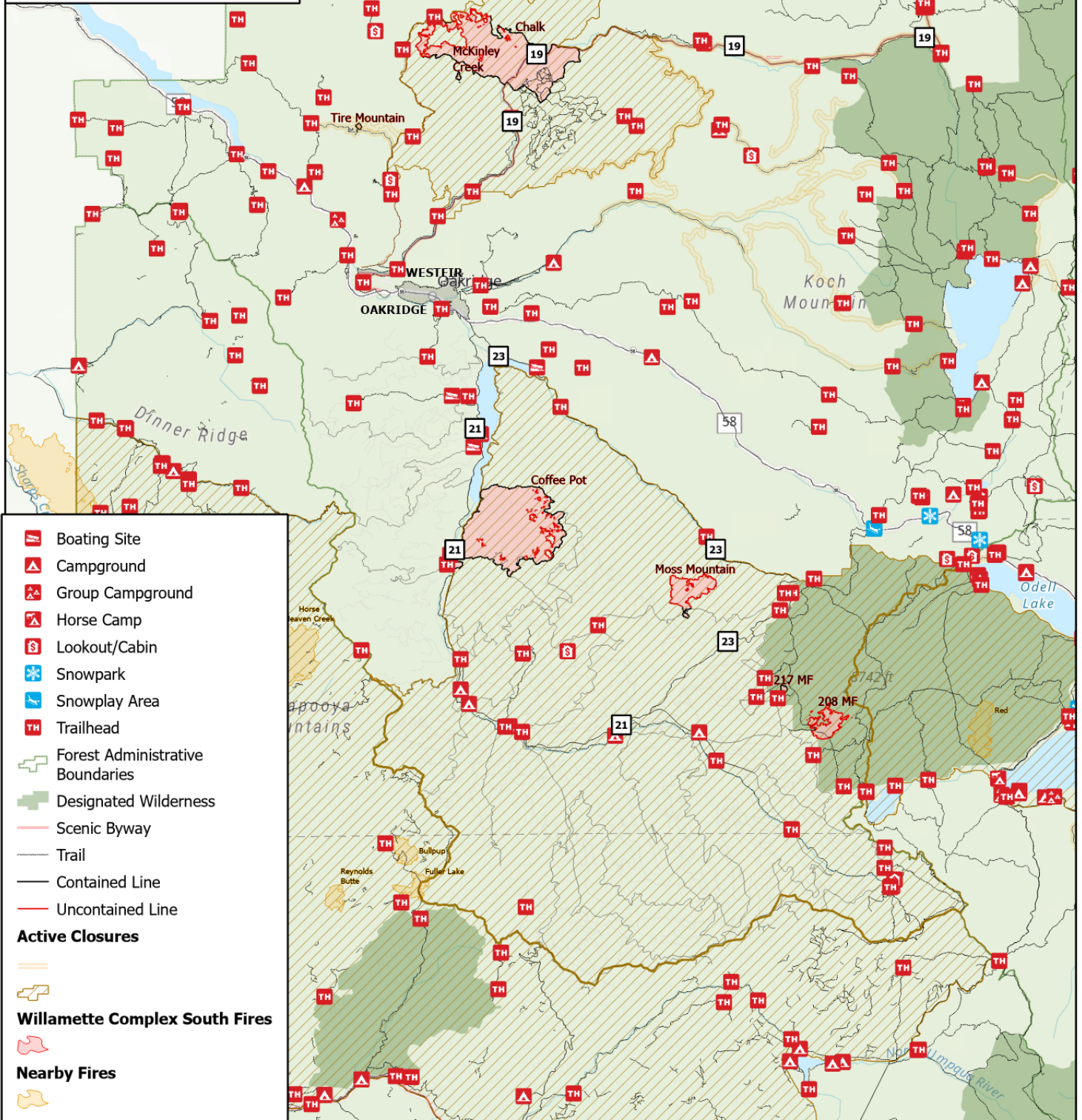


0 2 4 6 8

Miles

1:350,000 | EA CIMT | 09/02/2024 2105
Acres from IR
North American 1983 Datum, LatLong Grid

| Incident Name | Acres |
|----------------|-------|
| 208 MF | 602 |
| 217 MF | 38 |
| Chalk | 5,788 |
| Coffee Pot | 6,182 |
| McKinley Creek | 24 |
| Moss Mountain | 923 |
| Tire Mountain | 23 |



- Boating Site
 - Campground
 - Group Campground
 - Horse Camp
 - Lookout/Cabin
 - Snowpark
 - Snowplay Area
 - Trailhead
 - Forest Administrative Boundaries
 - Designated Wilderness
 - Scenic Byway
 - Trail
 - Contained Line
 - Uncontained Line
- Active Closures**
- Active Closures
- Willamette Complex South Fires**
- Willamette Complex South Fires
- Nearby Fires**
- Nearby Fires